

TEST REPORT

The following tested product(s) were submitted and identified by the vendor as:

Applicant : HK Lighting Group
Address of Applicant : 3529 Old Conejo Road, Suite 118, Newbury Park, CA 91320
Testing Laboratory : SGS Taiwan Ltd., Optics Laboratory
Laboratory Address : No. 33, Wu Chyuan Road, New Taipei Industrial Park, Wu Ku District, New Taipei City 24886, Taiwan (R.O.C.)
Product Name : LED Lighting
Model / Serial Number : ZXL08-M
Manufacturer : HK Lighting Group
Test Standard/Method : According to Client's Methods
Rating : AC 12 V (50 / 60) Hz, 2 W
Tested Condition : AC 12 V 60 Hz
Date of Issue : Nov. 07, 2016

- ◆ The test results are solely accountable for the testing samples.
- ◆ All reported contents shall not be used for advertising, publication, marketing strategies and legal proceedings.
- ◆ Excerpts taken from the report will not be valid unless otherwise stated in the laboratory agreement.

Test Results : -PLEASE SEE ATTACHED SHEETS-

**Signed for and on behalf of
SGS TAIWAN Ltd.**

Willie Yu
Sr. Engineer

1 DATE OF RECEIPT OF TEST ITEM

Nov. 01, 2016

2 DATE(S) OF PERFORMANCE OF THE TEST

Nov. 01, 2016 ~ Nov. 07, 2016

3 IDENTITY OF SAMPLES

Quantity	Model	Serial Number
1	ZXL08-M	# 1

4 TEST ITEMS**4.1 Total Luminous Flux (ψ_v)**

The test results were implemented referring to Clause 6.3 Luminous flux measurements on luminaires of Clause 6 PHOTOMETRIC METHODS AND PRACTICAL TEST PROCEDURES of CIE 121-1996.

4.2 Electrical Quantities

The test results were implemented referring to CIE 121-1996 THE PHOTOMETRY AND GONIOPHOTOMETRY OF LUMINAIRES.

4.3 Luminous Intensity Distribution

The test results of luminous intensity distribution were implemented referring to Clause 6.2 Luminous intensity distribution measurements of Clause 6 of CIE 121-1996, and CIE 70-1987 THE MEASUREMENT OF ABSOLUTE LUMINOUS INTENSITY DISTRIBUTIONS.

4.3.1 Polar Luminous Intensity Distribution**4.3.2 Cartesian Coordinates Luminous Intensity Distribution****4.3.3 Maximum Intensity****4.3.4 AAI Figure**

5 TEST CONDITIONS

Main Test Equipment:

Name	Brand	Model	S/N	Calibration Due Date
Digital Power Meter / AC Source	YOKOGAWA / apc	WT-310 / AFC-500W	C2PK22023V / F312120079	2017/8/18
Goniophotometer System	SGS Define (CZIBULA & GRUNDMANN GMBH / everfine)	GO-R5000-GS-PLUS	1001001	2017/1/31

Environmental Conditions:

Ambient temperature: (25 ± 1) °C
Relative humidity: (60 ± 20) %RH
Dark Room: < 0.05 lx

DUT Conditions:

Power Input: AC 12 V 60 Hz
Warm up time: > 60 minutes
Dimension: Ø 30 mm x L 155 mm

Measurement Conditions:

Orientation: Downward
Goniophotometer: 2.115 m (N.F.)

6 TEST RESULTS

6.1 Total Luminous Flux (ψ_v)

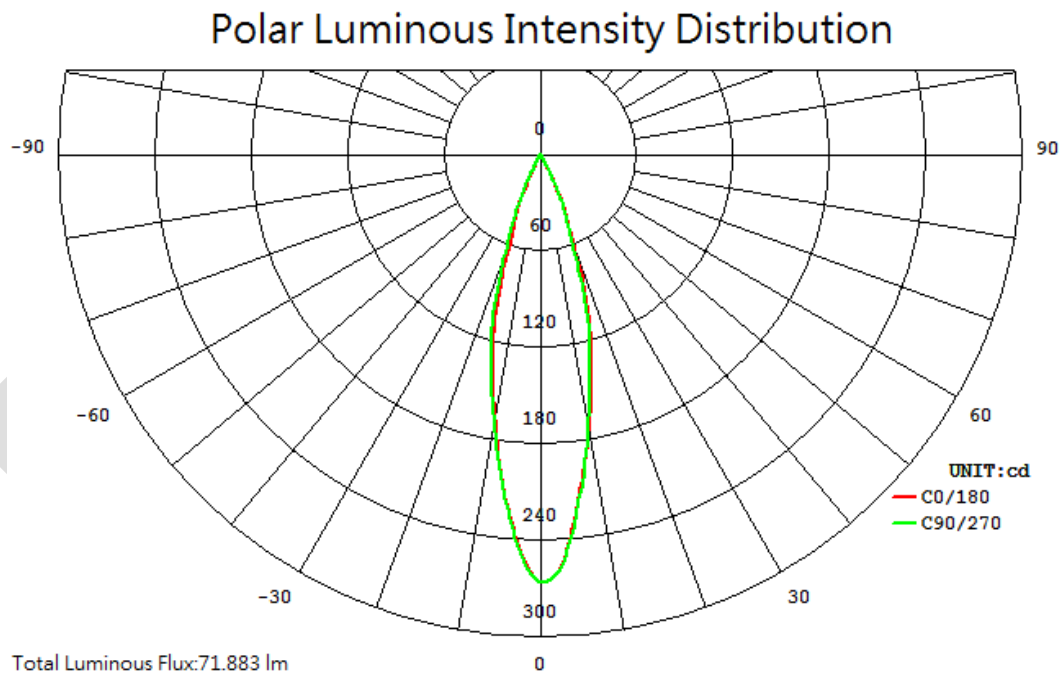
S/N	Total Luminous Flux	Note
# 1	71.883 lm	Stabilization

6.2 Electrical Quantities

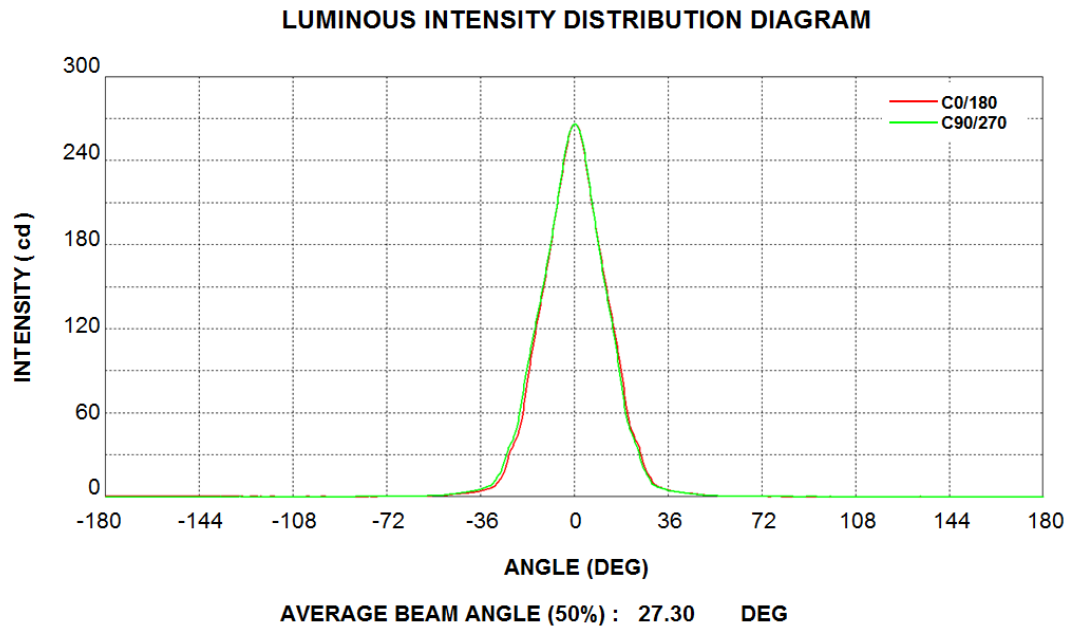
S/N	Input Voltage	Input Current	Input Power	Power Factor	Note
# 1	11.998 Vac	0.2627 A	2.0028 W	0.6354	Stabilization

6.3 Luminous Intensity Distribution

6.3.1 Polar Luminous Intensity Distribution



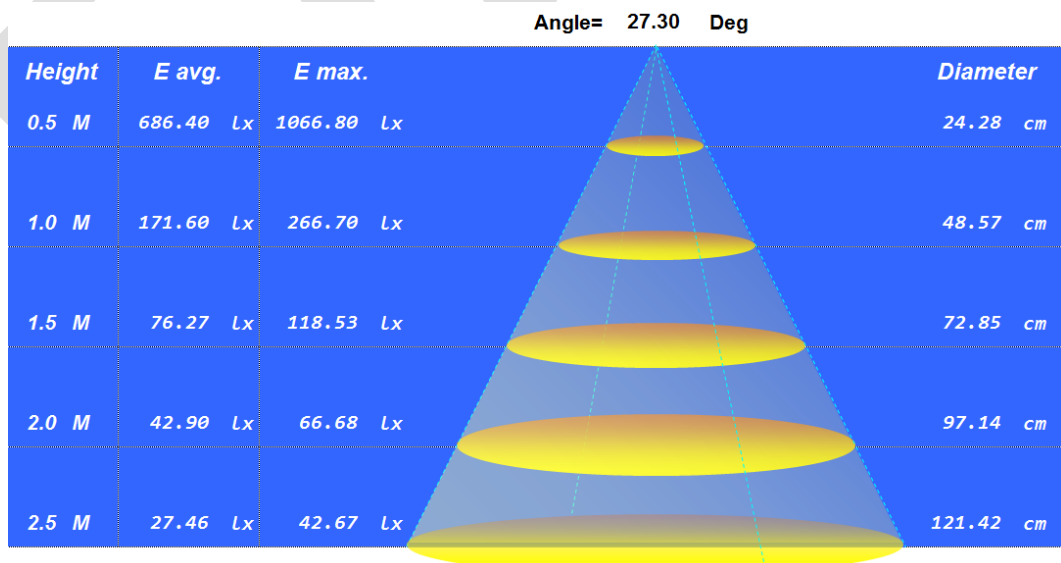
6.3.2 Cartesian Coordinates Luminous Intensity Distribution

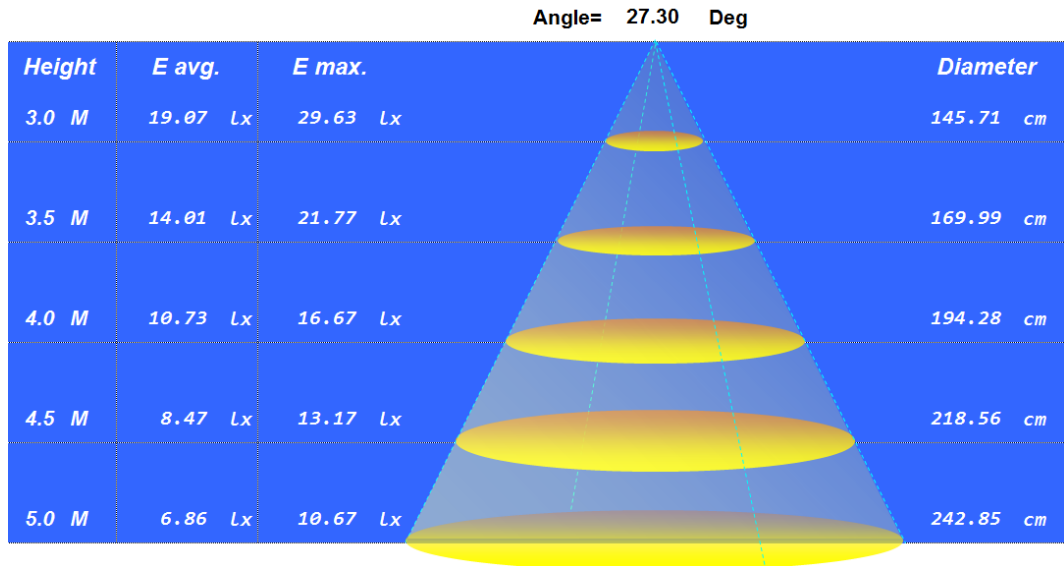


6.3.3 Maximum Intensity

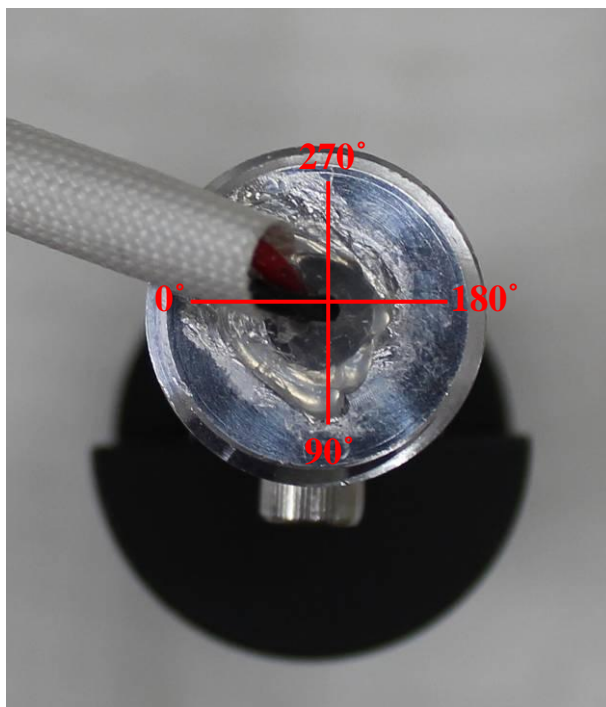
S/N	Maximum Intensity	Note
# 1	266.33 cd	max. intensity @ (C=10.0°, Gamma=0.5°)

6.3.4 AAI Figure



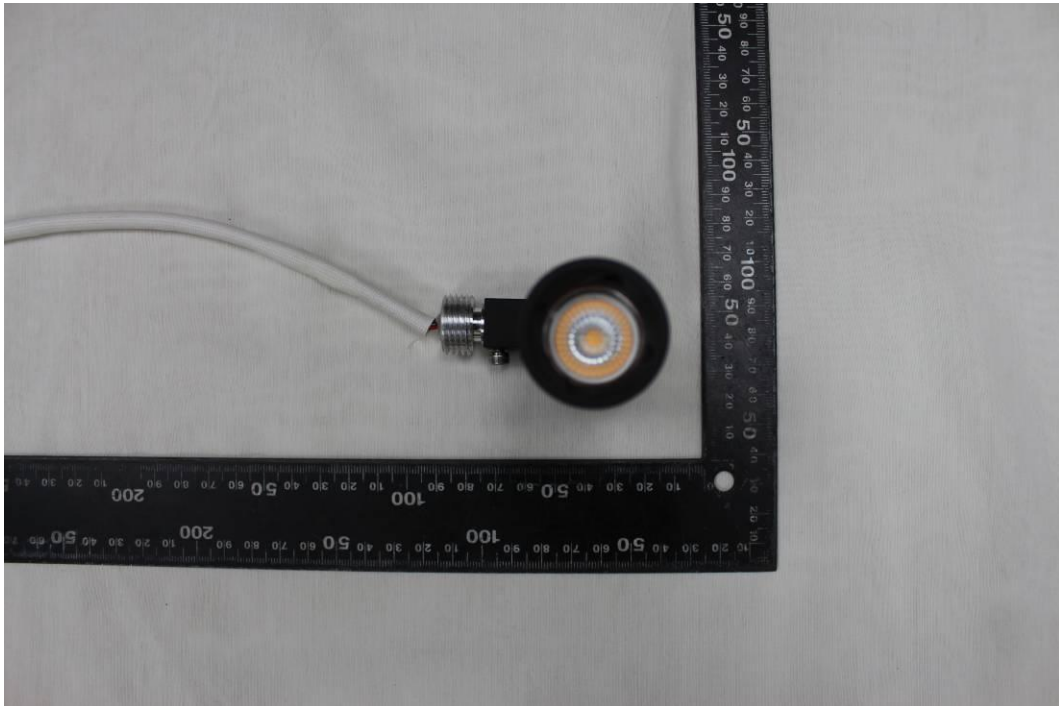


7 ANGLE DEFINITION

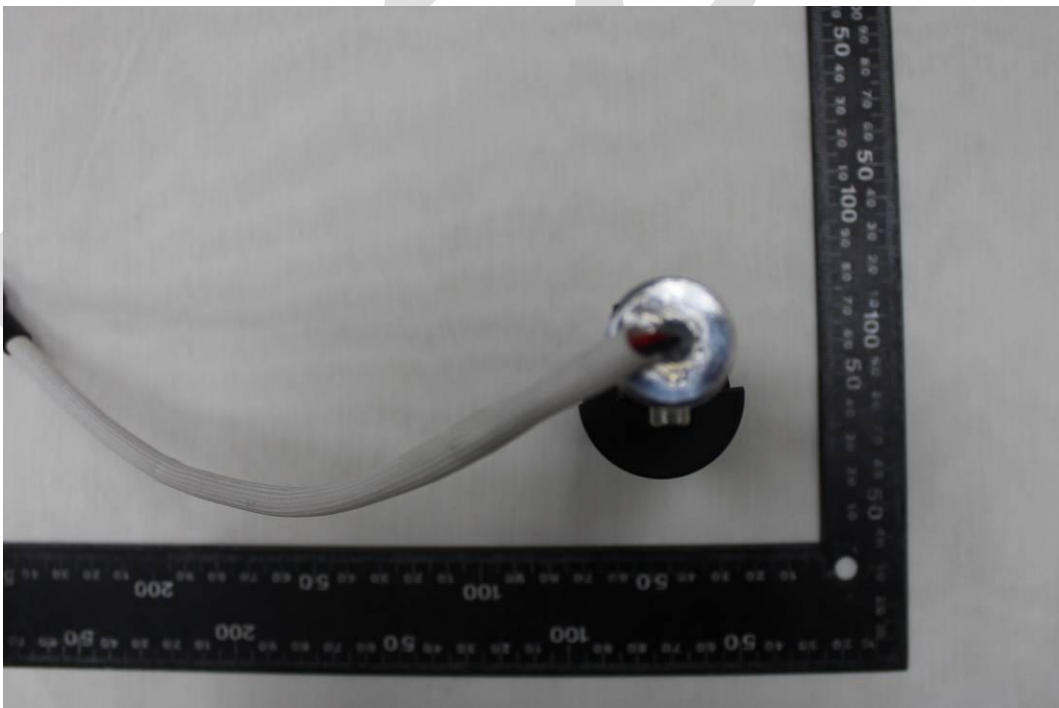


Back View

8 PHOTO



Front View



Back View



Side View



DUT

- End of Report -